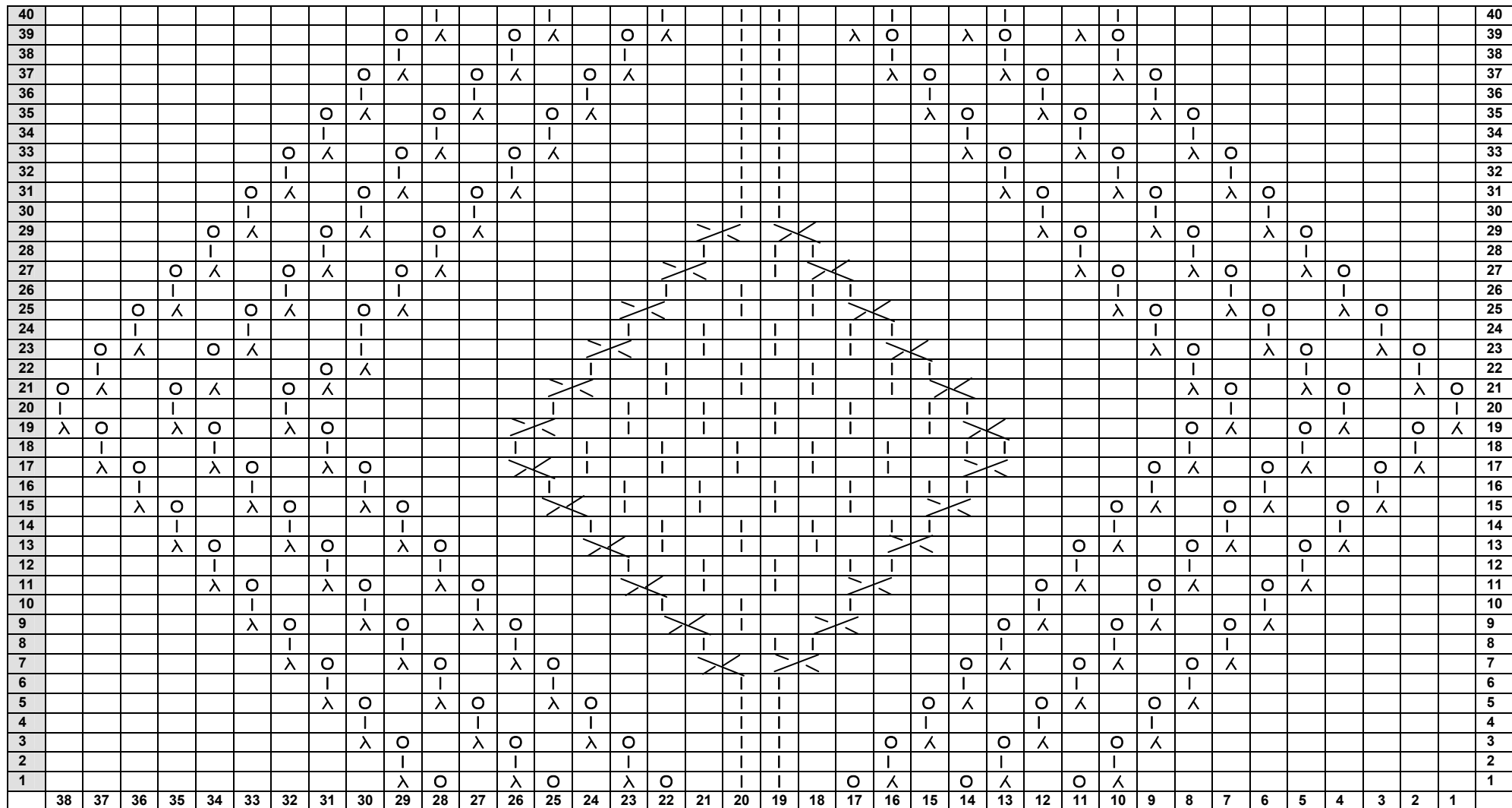


Charts for Crème Aran Style – center panel - Charts all represent sts as seen from front (RS) of knitting.
 Odd numbered rows are RS knit from right to left as shown by symbols, Even rows WS are knit from left to right of chart and sts are reversed.
 Thus a blank st box = P on RS, but K on WS.

Chart A – 38 stitches wide x 40 rows high. Chart a is repeated vertically and is the central panel.



symbol	meaning of symbol	symbol	meaning of symbol
	Blank = Purl on RS, Knit on WS	λ	Dec – lean to left = SSP or S11-p1-ssso
	Knit on RS, Purl on WS	λ /	Dec – lean to right = p2tog
O	YO – yarn over	⋈	Twist st over to right
		⋈	Twist st over to left

Crystal Palace Yarns
 Richmond, California 94804
 copyright © 2006
 This chart accompanies a Crème pattern found on
 our web site at www.straw.com